

VNG

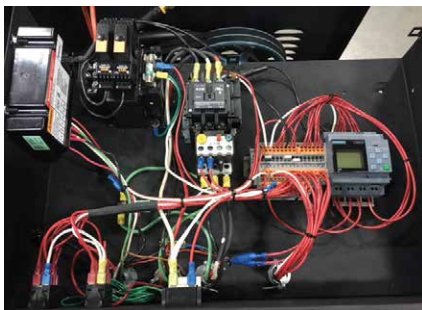
Stationary, Natural Gas-Heated, Hot Water Pressure Washer with Multiple-Gun Option

- Up to 10 GPM;
Up to 3000 PSI
- Belt-Driven Pump with
7-year Warranty
- Smart Control
- Electronic Ignition
- Remote Options



■ Industrial-strength **Motor** and cast-iron, bushing **Pulleys** use a convenient 2-bolt pulley adjustment for easy maintenance and longer life; notched, heat-reducing, "V" cogged belts connect the motor to the rugged **High-Pressure Pump** with three ceramic plungers, a forged brass head and a unique design that results in lower RPM than comparable pumps for less maintenance and a longer life. The pump also is backed by a 7-year warranty.

■ Brass, anti-syphon **Detergent Metering Valve** locks out air and dispenses precise amount of cleaning agent.



PROGRAMMABLE SMART CONTROL now standard for all VNG machines allows auto start/stop and time delay shutdown features without changing any hardware. It also provides complete control of the equipment run time.

■ Extra-durable **Heating Coil** made of leak-free, cold-rolled, Schedule 80 steel pipe with five-year warranty.

■ Rugged **Steel Cabinet**, with vented panels, is painted with an epoxy powder coat finish for all-weather protection.

■ Helpful **Tri-Lingual Labels** with operating instructions in English, Spanish and French for owner and operator protection.



■ **EASY!Force** trigger gun with cruise control like technology uses its own recoil force to hold the trigger down - so, no more sore hands after hours of use.

■ Industrial grade overload protected **Control Switches** provide years of reliable performance.

■ **Consolidated Plumbing** means both the water supply inlet and the quick-couple, high-pressure outlet are next to each other for ease of installation.

■ Four quick-couple **Nozzles** are made of hardened stainless steel and mounted for ready access.



■ Rust-free, **Stainless Steel Float Tank** with stainless steel inlet filter and low-turbulence float valve allows for high-pressure application of detergent.

■ Industrial-duty **Electric Motor** with multiple voltage options and thermal overload protection.

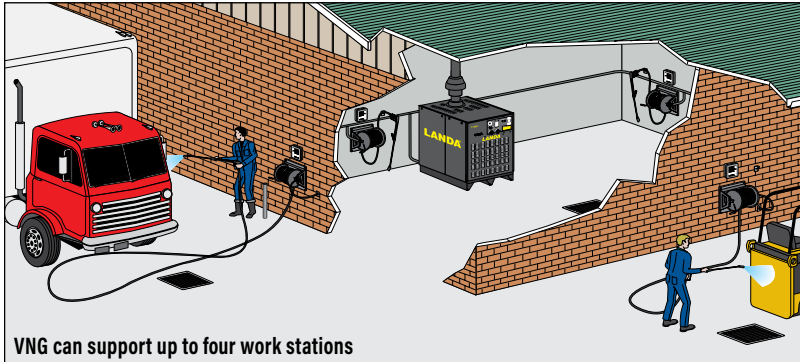
■ Top-of-the-line **Tuff-Skin Hose** has 24-inch hose guard for burst protection and seven times the abrasion resistance as other high-pressure hoses; rated up to 6000 PSI

■ Many **Safety Features**, including automatic time-delay shutdown, rupture disk and thermal pump protector to prevent the buildup of excessive pressures or heat.

■ **Electronic Ignition** comes standard eliminating the hassle of having to constantly light the pilot flame.

WHY CHOOSE THE VNG?

A variety of exciting options and features make the VNG one of the most versatile machines in the industry. Housed in an attractive and sturdy metal cabinet, this machine offers easy access to its control panel and indicator lights. The VNG is loaded with quality and safety features throughout and is flexible enough to support up to four optional remote wash stations, making it the industry standard for natural gas heated hot water pressure washers.



VNG can support up to four work stations



Model #	Part #	GPM	PSI	Pump RPM	Pump	Motor HP	Volts	Phase	Amps	Approx BTUs	Ship Wt (lbs)
VNG4-20024A	1.109-563.0	4.0	2000	930	LT6036R.2	6.2	230	1	27	360,000	1010
VNG4-20024B	1.109-564.0	4.0	2000	930	LT6036R.2	6.2	230	3	15	360,000	990
VNG4-20024C	1.109-565.0	4.0	2000	930	LT6036R.2	6.2	460	3	8	360,000	990
VNG4-20024H	1.109-568.0	4.0	2000	930	LT6036R.2	6.2	208	3	18	360,000	1000
VNG4-30024A	1.109-569.0	3.9	3000	775	LT6036R.2	8.2	230	1	36	354,000	1030
VNG4-30024B	1.109-570.0	3.9	3000	775	LT6036R.2	8.2	230	3	25	354,000	1030
VNG4-30024C	1.109-571.0	3.9	3000	775	LT6036R.2	8.2	460	3	15	354,000	1030
VNG4-30024H	1.109-574.0	3.9	3000	775	LT6036R.2	8.2	208	3	27	354,000	1010
VNG6-30024B	1.109-575.0	6.0	3000	1525	LT6036L.2	15.0	230	3	39	507,000	1830
VNG6-30024C	1.109-576.0	6.0	3000	1525	LT6036L.2	15.0	460	3	19	507,000	1830
VNG8-30024B †	1.109-579.0	8.0	3000	1370	LX9536L.2	20.0	230	3	52	658,000	1845
VNG8-30024C †	1.109-580.0	8.0	3000	1370	LX9536L.2	20.0	460	3	26	658,000	1845
VNG8-30024H †	1.109-582.0	8.0	3000	1370	LX9536L.2	20.0	208	3	54	658,000	1845
VNG10-20024B †	1.109-559.0	10.0	2000	1630	LX1036L.2	20.0	230	3	46	816,000	1925
VNG10-20024C †	1.109-560.0	10.0	2000	1630	LX1036L.2	20.0	460	3	23	816,000	1925

Dimensions: VNG4 45"L x 36"W x 48"H VNG6/VNG8/VNG10 70"L x 43"W x 57"H † EASY!Force not available on this model.

Field Installed Options & Accessories

Available for All Models

- 8.924-815.0 Remote Operator Station Kit
- 8.924-816.0 Electronic Detergent Kit
- 8.924-814.0 Wireless 6 Channel Remote Kit
- 8.924-878.0 Wall Mount Remote Bracket Kit
- 9.801-040.0 Draft Diverter, 10" (for models up to 4 GPM)
- 8.717-730.0 Draft Diverter, 12" (for models over 4 GPM)

Field Installed Options & Accessories

LP-Gas Conversion Kits

- 9.801-019.0 LP Conversion Kit (for models up to 4 GPM) ♦
- 8.904-068.0 LP Conversion Kit (for models over 4 GPM) ♦
- 9.802-633.0 LP Regulator Assembly

Options For Older VNG Units Only [Pre Smart Control]

- 8.941-545.0 Additional LanCom Remote
- 8.930-131.0 Wall Mount Bracket for Fixed LanCom Remote

♦ Factory Installed

Distributed by:



1150 Davis Road, Suite J ▪ Elgin, IL 60123
(800) 788-8867 ▪ info@lorchem.com ▪ lorchem.com

We Know How To Get Things **CLEAN**

DETERGENT FOR EVERY JOB

Landa Kärcher Group's innovative detergent lineup makes your cleaning job easier and faster. Phosphate-free to meet the most stringent environmental demands without sacrificing cleaning effectiveness. We'll match you with a product designed for your specific application.

