

VHG

Compact, Natural Gas-Heated Hot Water Pressure Washer

- Up to 8.0 GPM, 3000 PSI
- Rugged Belt-Driven Pump with 7-year Warranty
- Electronic Ignition
- LP Conversion Option
- Programmable Smart Control

■ Top-of-the-line **Tuff-Skin Hose**, with 24-inch hose guard for burst protection and swivel swedge fitting for twist-free operation, has seven times the abrasion resistance as other high-pressure hoses (hose reel is optional).

■ Many **Safety Features**, including a rupture disk and thermal pump protector to prevent the buildup of excessive pressures or heat.

■ High-efficiency burner has **Electronic Ignition** standard on all models, eliminating the hassle of having to constantly light the pilot flame.

■ **Hinged Side** allows for quick access to components without removing the cabinet.

■ Industrial-duty **Electric Motor** with multiple voltage options and thermal overload protection.

■ Extra-durable **Heating Coil** made of leak-free, cold-rolled, Schedule 80 steel pipe with five-year warranty.

■ Rugged **Steel Frame** painted with an epoxy powder-coat finish for all-weather protection (also available in stainless steel option).

■ Helpful **Tri-Lingual Labels** with operating instructions in English, Spanish and French for owner and operator protection.

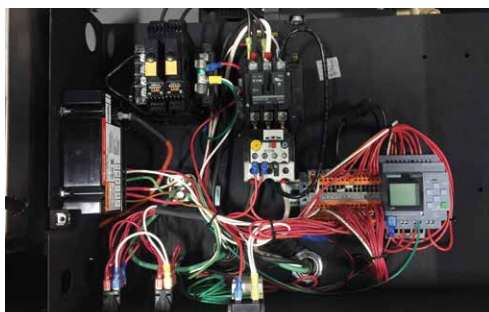
■ Our patented **Cool-Bypass*** system keeps pump water temperature low while in bypass mode.

■ Overload protected **Control Switches** are conveniently located for ease of operation.

■ Brass, anti-syphon **Detergent Metering Valve** locks out air and dispenses precise amount of cleaning agent.

■ Industrial-grade, dual belt-driven **High-Pressure Pump** has a tri-plex, forged brass head with a 7-year limited warranty and U-seals for greater pump protection.

■ Four quick-couple **Nozzles**, made of hardened stainless steel, are mounted for ready access.



■ Rust-free, stainless steel **Float Tank** with stainless steel inlet filter and low-turbulence float valve allows for high-pressure application of detergent.

■ Cast-iron, bushed-bore **Pulleys** with two-bolt adjustment means long life and easy maintenance on the high-pressure pump.

■ **Consolidated Plumbing** has put both the water supply inlet and quick-couple, high-pressure outlet next to each other for ease of installation.

■ Insulated, fatigue-free **Trigger Gun** with chrome-plated, dual-lance **Variable Pressure Wand** make for easy cleaning and adjusting the pressure while washing.

PROGRAMMABLE SMART CONTROL now standard for all VGH machines allows auto start/stop and time delay shutdown features without changing any hardware. It also provides complete control of the equipment run time.

WHY CHOOSE THE VHG?

Compact but heavy duty, this natural gas model's footprint is a mere 24" x 53" for the smallest unit, making it an ideal choice for congested work areas or wash bays where space is at a premium. The small size makes it no less efficient; with cleaning power up to 3000 PSI and 8 GPM, this machine delivers enough cleaning action to tackle a variety of challenges, and includes an optional wireless remote control. The VHG is especially adept at cleaning and maintaining the appearance of the dirtiest fleet or construction equipment.



Model #	Part #	GPM	PSI	Pump RPM	Motor HP	Volts	Phase	Amps	Approx BTUs	Ship Wt (lbs)
VHG4-20024A	1.109-534.0	3.5	2000	1175	5.0	230	1	25	364,000	750
VHG4-22024A	1.109-535.0	4.0	2200	835	6.2	230	1	27	364,000	790
VHG4-22024B	1.109-536.0	4.0	2200	835	6.2	230	3	15	364,000	770
VHG4-22024C	1.109-537.0	4.0	2200	835	6.2	460	3	8	364,000	780
VHG4-22024G	1.109-538.0	4.0	2200	835	6.2	208	1	29	364,000	790
VHG4-22024H	1.109-539.0	4.0	2200	835	6.2	208	3	18	364,000	780
VHG4-30024A	1.109-541.0	3.9	3000	775	8.2	230	1	36	354,000	868
VHG4-30024B	1.109-542.0	3.9	3000	775	8.2	230	3	25	354,000	815
VHG4-30024C	1.109-543.0	3.9	3000	775	8.2	460	3	15	354,000	815
VHG4-30024G	1.109-544.0	3.9	3000	775	8.2	208	1	38	354,000	815
VHG4-30024H	1.109-545.0	3.9	3000	775	8.2	208	3	27	354,000	815
VHG5-30024B	1.109-546.0	4.8	3000	1035	10.0	230	3	29	480,000	780
VHG5-30024C	1.109-547.0	4.8	3000	1035	10.0	460	3	14	480,000	835
VHG5-30024H	1.109-548.0	4.8	3000	1035	10.0	208	3	30	480,000	780
VHG6-30024B	1.109-549.0	6.0	3000	1525	15.0	230	3	39	507,000	1675
VHG6-30024C	1.109-550.0	6.0	3000	1525	15.0	460	3	19	507,000	1675
VHG8-30024B	1.109-552.0	8.0	3000	1370	20.0	230	3	52	658,000	1845
VHG8-30024C	1.109-553.0	8.0	3000	1370	20.0	460	3	26	658,000	1845

Field Installed Options & Accessories

Available for All Models

- 8.903-542.0 Small Stainless Steel Coil Wrap ♦
- 8.903-546.0 Large Stainless Steel Coil Wrap ♦
- 8.924-815.0 Remote Operator Station Kit
- 8.924-816.0 Electronic Detergent Kit
- 8.924-814.0 Wireless 6 Channel Remote Kit
- 8.924-878.0 Wall Mount Remote Bracket Kit
- 9.802-633.0 LP Gas Regulator Assembly

♦ Factory Installed

Available for Models Up to 5 GPM

- 8.903-543.0 Wheeled Cart for VHG Propane Model
- 9.801-040.0 Draft Diverter, 10"
- 9.801-019.0 LP Conversion Kit ♦
- 8.903-541.0 SS Coil Wrap, 4-Panel Skirt & Cover ♦

Available for Models Over 5 GPM

- 8.717-730.0 Draft Diverter, 12" (15 & 20 HP models)
- 8.904-068.0 LP Conversion Kit (15 & 20 HP models) ♦
- 8.903-545.0 SS Coil Wrap, 4-Panel Skirt & Cover ♦

Options For Older VHG Units Only [Pre Smart Control]

- 8.941-545.0 Additional LanCom Remote
- 8.930-131.0 Wall Mount Bracket for Fixed LC Remote

Distributed by:



1150 Davis Road, Suite J ▪ Elgin, IL 60123
(800) 788-8867 ▪ info@lorchem.com ▪ lorchem.com

We Know How To Get Things **CLEAN**

*Patent US 8,496,188 B2