

VHG

Compact, Natural Gas-Heated Hot Water Pressure Washer

- Up to 8.0 GPM, 3000 PSI
- Rugged Belt-Driven Pump with 7-year Warranty
- Electronic Ignition
- LP Conversion Option
- Programmable Smart Control

■ **Top-of-the-line Tuff-Skin Hose**, with 24-inch hose guard for burst protection and swivel swedge fitting for twist-free operation, has seven times the abrasion resistance as other high-pressure hoses (hose reel is optional).

■ **Many Safety Features**, including a rupture disk and thermal pump protector to prevent the buildup of excessive pressures or heat.

■ **High-efficiency burner** has **Electronic Ignition** standard on all models, eliminating the hassle of having to constantly light the pilot flame.

■ **Hinged Side** allows for quick access to components without removing the cabinet.

■ **Industrial-duty Electric Motor** with multiple voltage options and thermal overload protection.

■ **Extra-durable Heating Coil** made of leak-free, cold-rolled, Schedule 80 steel pipe with five-year warranty.

■ **Rugged Steel Frame** painted with an epoxy powder-coat finish for all-weather protection (also available in stainless steel option).

■ **Helpful Tri-Lingual Labels** with operating instructions in English, Spanish and French for owner and operator protection.

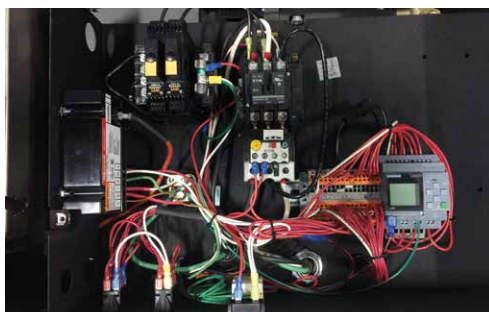
■ Our patented **Cool-Bypass*** system keeps pump water temperature low while in bypass mode.

■ **Overload protected Control Switches** are conveniently located for ease of operation.

■ **Brass, anti-syphon Detergent Metering Valve** locks out air and dispenses precise amount of cleaning agent.

■ **Industrial-grade, dual belt-driven High-Pressure Pump** has a tri-plex, forged brass head with a 7-year limited warranty and U-seals for greater pump protection.

■ **Four quick-couple Nozzles**, made of hardened stainless steel, are mounted for ready access.



PROGRAMMABLE SMART CONTROL now standard for all VHG machines allows auto start/stop and time delay shutdown features without changing any hardware. It also provides complete control of the equipment run time.

■ **Rust-free, stainless steel Float Tank** with stainless steel inlet filter and low-turbulence float valve allows for high-pressure application of detergent.

■ **Cast-iron, bushed-bore Pulleys** with two-bolt adjustment means long life and easy maintenance on the high-pressure pump.

■ **Consolidated Plumbing** has put both the water supply inlet and quick-couple, high-pressure outlet next to each other for ease of installation.

■ **Insulated, fatigue-free Trigger Gun** with chrome-plated, dual-lance **Variable Pressure Wand** make for easy cleaning and adjusting the pressure while washing.

WHY CHOOSE THE VHG?

Compact but heavy duty, this natural gas model's footprint is a mere 24" x 53" for the smallest unit, making it an ideal choice for congested work areas or wash bays where space is at a premium. The small size makes it no less efficient; with cleaning power up to 3000 PSI and 8 GPM, this machine delivers enough cleaning action to tackle a variety of challenges, and includes an optional wireless remote control. The VHG is especially adept at cleaning and maintaining the appearance of the dirtiest fleet or construction equipment.



VHG4-30024 Shown with optional Stainless Steel Coil Wrap and 4-Panel Skirt & Cover

Model #	Part #	GPM	PSI	Pump RPM	Pump	Motor HP	Volts	Phase	Amps	Approx BTUs	Ship Wt (lbs)
VHG4-20024A	1.109-534.0	3.5	2000	1175	LM4035R.3	5.0	230	1	25	364,000	750
VHG4-22024A	1.109-535.0	4.0	2200	835	LT6036R.2	6.2	230	1	27	364,000	790
VHG4-22024B	1.109-536.0	4.0	2200	835	LT6036R.2	6.2	230	3	15	364,000	770
VHG4-22024C	1.109-537.0	4.0	2200	835	LT6036R.2	6.2	460	3	8	364,000	780
VHG4-22024G	1.109-538.0	4.0	2200	835	LT6036R.2	6.2	208	1	29	364,000	790
VHG4-22024H	1.109-539.0	4.0	2200	835	LT6036R.2	6.2	208	3	18	364,000	780
VHG4-30024A	1.109-541.0	3.9	3000	775	LT6036R.2	8.2	230	1	36	354,000	868
VHG4-30024B	1.109-542.0	3.9	3000	775	LT6036R.2	8.2	230	3	25	354,000	815
VHG4-30024C	1.109-543.0	3.9	3000	775	LT6036R.2	8.2	460	3	15	354,000	815
VHG4-30024G	1.109-544.0	3.9	3000	775	LT6036R.2	8.2	208	1	38	354,000	815
VHG4-30024H	1.109-545.0	3.9	3000	775	LT6036R.2	8.2	208	3	27	354,000	815
VHG5-30024B	1.109-546.0	4.8	3000	1035	LT6036R.2	10.0	230	3	29	480,000	780
VHG5-30024C	1.109-547.0	4.8	3000	1035	LT6036R.2	10.0	460	3	14	480,000	835
VHG5-30024H	1.109-548.0	4.8	3000	1035	LT6036R.2	10.0	208	3	30	480,000	780
VHG6-30024B	1.109-549.0	6.0	3000	1525	LT6036L.2	15.0	230	3	39	507,000	1675
VHG6-30024C	1.109-550.0	6.0	3000	1525	LT6036L.2	15.0	460	3	19	507,000	1675
VHG8-30024B ‡	1.109-552.0	8.0	3000	1370	LX9536L.2	20.0	230	3	52	658,000	1845
VHG8-30024C ‡	1.109-553.0	8.0	3000	1370	LX9536L.2	20.0	460	3	26	658,000	1845

Dimensions: VHG4/VHG5 53"L x 24"W x 49"H VHG6/VHG8 66"L x 35"W x 62"H ‡ EASY!Force not available on this model.

Field Installed Options & Accessories

Available for All Models

- 8.903-542.0 Small Stainless Steel Coil Wrap ♦
- 8.903-546.0 Large Stainless Steel Coil Wrap ♦
- 8.924-815.0 Remote Operator Station Kit
- 8.924-816.0 Electronic Detergent Kit
- 8.924-814.0 Wireless 6 Channel Remote Kit
- 8.924-878.0 Wall Mount Remote Bracket Kit
- 9.802-633.0 LP Gas Regulator Assembly

♦ Factory Installed

Available for Models Up to 5 GPM

- 8.903-543.0 Wheeled Cart for VHG Propane Model
- 9.801-040.0 Draft Diverter, 10"
- 9.801-019.0 LP Conversion Kit ♦
- 8.903-541.0 SS Coil Wrap, 4-Panel Skirt & Cover ♦

Available for Models Over 5 GPM

- 8.717-730.0 Draft Diverter, 12" (15 & 20 HP models)
- 8.904-068.0 LP Conversion Kit (15 & 20 HP models) ♦
- 8.903-545.0 SS Coil Wrap, 4-Panel Skirt & Cover ♦
- Options For Older VHG Units Only [Pre Smart Control]**
- 8.941-545.0 Additional LanCom Remote
- 8.930-131.0 Wall Mount Bracket for Fixed LC Remote

Distributed by:



1150 Davis Road, Suite J ▪ Elgin, IL 60123
(800) 788-8867 ▪ info@lorchem.com ▪ lorchem.com

We Know How To Get Things **CLEAN**

DETERGENT FOR EVERY JOB

Landa Kärcher Group's innovative detergent lineup makes your cleaning job easier and faster. Phosphate-free to meet the most stringent environmental demands without sacrificing cleaning effectiveness. We'll match you with a product designed for your specific application.



*Patent US 8,496,188 B2
Form #8.913-847.0 / LAN_VHG
© 2017 - 07/18