

PDHW

Industrial-Duty, Kubota Diesel-Powered,
Self-Contained, Hot Water Pressure Washer

- 4.7 GPM, 3500 PSI
- Kubota Diesel Engine
- Belt-Drive Pump with 7-Year Warranty
- SureFire Burner*
- 2,900 Watt Generator*

■ Rugged tri-plunger, belt-drive, **High-Pressure LT Pump** with forged brass head and 7-year warranty.

■ **Kubota Factory-Certified** application of industrial-duty 599cc **Kubota Diesel Engine** with keyed electric start.

■ High-efficiency **12V SureFire Burner*** is mounted on the end for ease of servicing and fuel adjustment.

■ **120V Burner** and GFCI receptacle are powered by reliable **2,900 Watt Generator.***

■ Easy to service with **Locking Swing-Out Access Door.**

■ Conveniently placed **Control Panel** features **Keyed Ignition Switch, Burner On/Off Switch, Indicator Lights** for glow plug, low water and low oil, **Adjustable Thermostat** to control temperature, and **Hour Meter** for total operating time. Models with generator have a **120V GFCI Receptacle.**

■ Helpful **Trilingual Labels** with operating instructions and warnings in English, Spanish and French for owner and operator protection.

■ Trailer-ready with pre-drilled **Trailer Mounting Brackets.**

■ Cast-iron bushing **Pulleys** and two notched "V" cogged belts provide cooler operation and longer life.

■ Super-duty **Horizontal Heating Coil**, made of cold-rolled, Schedule 80 steel pipe has a 5-year warranty and is surrounded by an aluminized steel inner wrap and stainless steel top wrap.

■ Extremely versatile with many **Options** that include **Wheel Kit, Float Tank** with inlet injection, **Hose Reel Platform, Downstream Injector, Lift/Stack Platform, stainless steel Drip Pan, emergency engine Air Shutoff, and engine Spark Arrestor.**

■ Power platform is mounted on **Vibration Isolators** to extend the life of key components.

■ Rugged, 2-inch, polyester powder-coated channel **Steel** or **Stainless Steel Frame** for all-weather resistance includes **Forklift Guides** for easy mobility.

■ Extra-large 22-gallon diesel **Fuel Tank** has elevated fuel lines to prevent debris in fuel from causing damage, and tilts out for easy servicing.

■ Heavy-duty **Fuel-Water Separator** has replaceable element for removing water that can damage the burner fuel pump.

■ 50 ft. of 3/8", double-wire braid **Tuff-Skin Hose** featuring a 24-inch **Hose Guard** for burst protection.

■ **Four Quick-Couple Nozzles** are made of hardened stainless steel and are mounted for ready access.

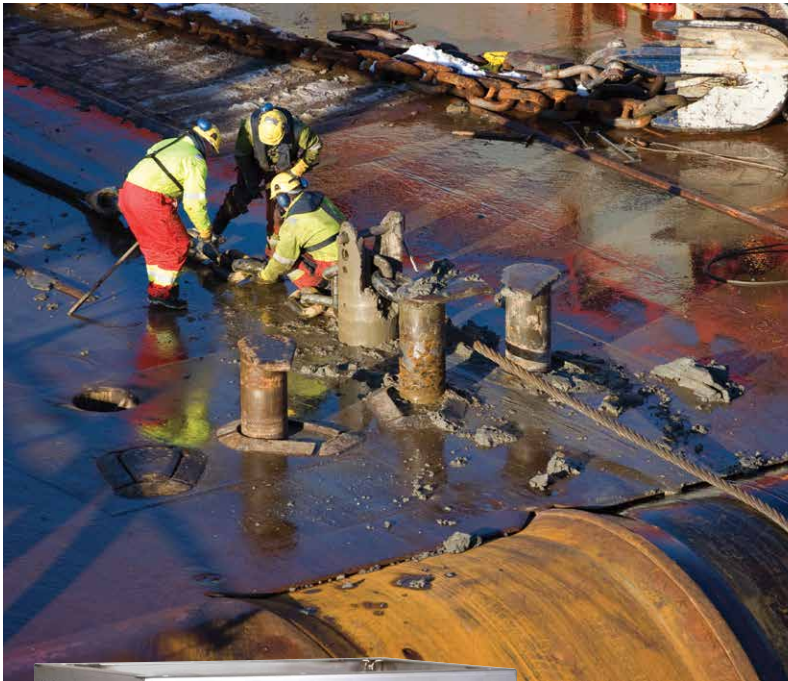


■ Many **Safety Features**, including rupture disk, thermal pump protector and high-temperature shut down to guard against any buildup of excessive pressures or heat.

■ Durable polyurethane **Battery Box** protects battery and is easy to access.

■ Insulated, spring-loaded **Trigger Gun** and insulated, dual-lance **Variable Pressure Wand** make it easy to switch between wash and rinse modes.

* SureFire burner on 12V burner models only. 2,900 watt generator on 120V burner models only.



WHY CHOOSE THE PDHW

The PDHW is a diesel-powered, hot water pressure washer. It combines the versatility of a compact size with the ruggedness and cleaning power of a full-skid pressure washer. The PDHW delivers cleaning power of 3500 PSI with a flow rate of 4.7 GPM. The PDHW is packed with:

QUALITY: Powered by a reliable Kubota electric-start engine, the PDHW features a top-of-the-line, oil-bath, tri plunger, belt-drive LT pump with 7-year warranty. The heating coil is made of ½-inch Schedule 80 cold-rolled pipe with a stainless steel outer top wrap. The sturdy steel frame gets all-weather protection from a polyester powder coat finish or stainless steel.

VERSATILITY: A 2,900 watt generator (on 120V burner models) provides power for the burner as well as a 120V outlet for low-wattage applications. The PDHW has forklift guides for transporting and brackets for mounting on a trailer. The extra-large, tilt-out, fuel tank provides hours of continuous cleaning. The PDHW has loads of additional options to make it the perfect machine for any job including off-shore oil rigs. Options include float tank with inlet injection, hose reel platform, downstream injector, lift/stack platform, stainless steel drip pan, wheel kit, emergency engine air shutoff, and engine spark arrestor.

SAFETY: As with all our models, the PDHW comes certified to the rigid UL-1776 safety standards, featuring: 24-inch hose guard for burst protection; thermal pump protector; high-temperature shutdown to prevent super-high heat buildup; and rupture disk to vent any buildup of excessive pressure in the heating coil.



The versatile PDHW series includes stainless steel models that are perfect for high corrosion environments such as off-shore oil drilling.

PDHW5-35624E/SS shown with optional stainless steel Lift/Stack Platform Kit and Emergency Air Shutoff Kit



Model #	Part #	GPM	PSI	Pump RPM	Engine	CCs	Burner Voltage	Ship Wt (lbs)
PDHW5-35624E	1.110-060.0	4.7	3500	1125	Kubota Z602	599	12V DC	948
PDHW5-35624E/SS	1.110-061.0	4.7	3500	1125	Kubota Z602	599	12V DC	948
PDHW5-35624E/G	1.110-062.0	4.7	3500	1125	Kubota Z602	599	120V AC	998
PDHW5-35624E/G/SS	1.110-063.0	4.7	3500	1125	Kubota Z602	599	120V AC	998

E = Electric start engine (battery not included); G = 2,900 watt generator; SS = Stainless steel frame

Distributed by:



1150 Davis Road, Suite J ▪ Elgin, IL 60123
(800) 788-8867 ▪ info@lorchem.com ▪ lorchem.com

We Know How To Get Things **CLEAN**

Field Installed Options & Accessories

8.919-983.0	Hose Reel Platform Kit
8.904-525.0	Wheel Kit (4 tires)
8.919-981.0	Float Tank with Inlet Injection Kit
9.802-225.0	Downstream Detergent Injector Kit
8.919-984.0	Lifting Sling Kit
8.919-990.0	Lift/Stack Platform Kit
8.920-298.0	Lift/Stack Platform Kit, Stainless Steel
8.919-985.0	Stainless Steel Drip Pan Kit
8.919-988.0	Emergency Air Shutoff Kit
8.919-989.0	Engine Spark Arrestor Kit