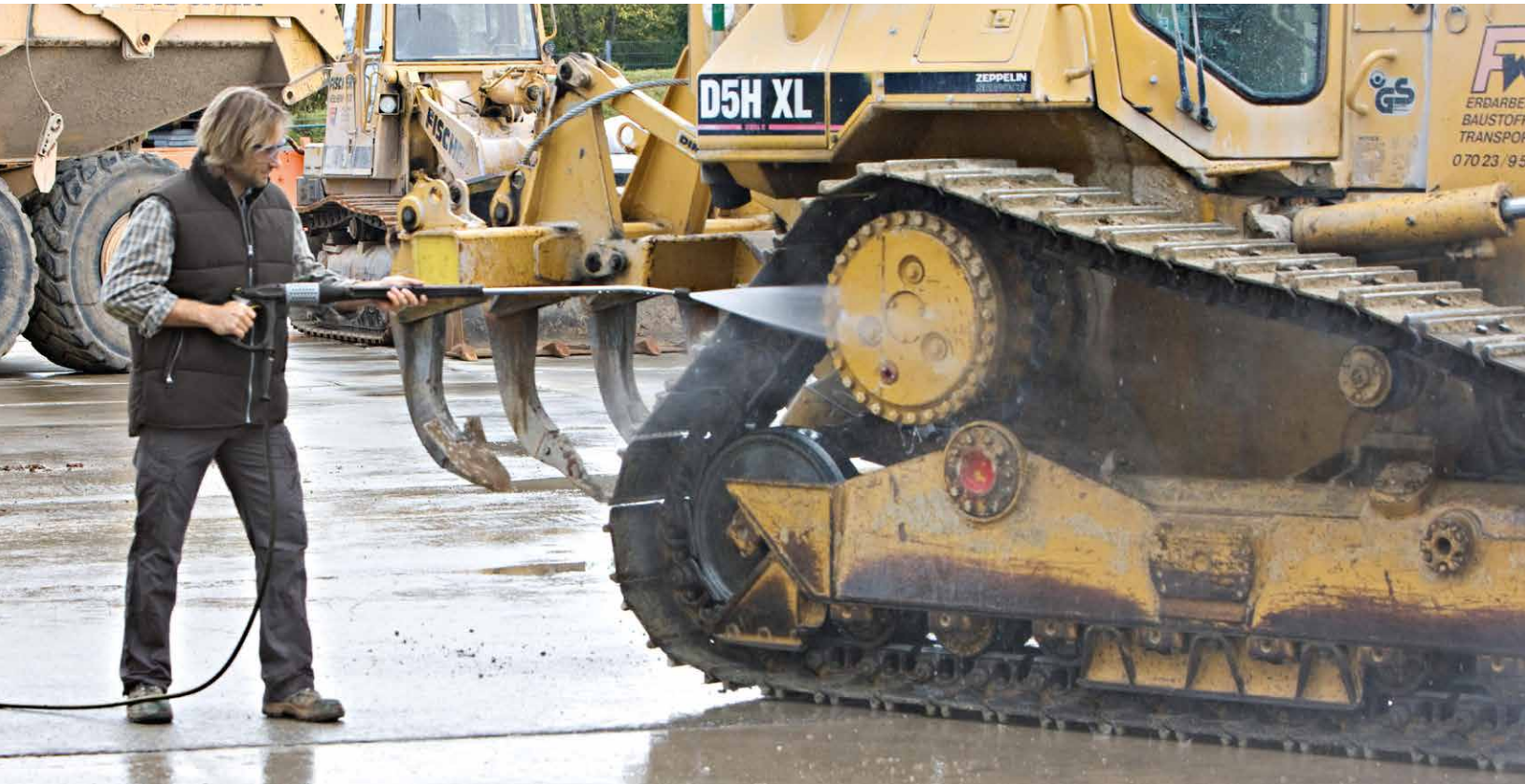


KÄRCHER

makes a difference



DURABILITY AND PERFORMANCE ANYWHERE NEEDED

Skid-mounted, gasoline-powered, hot water pressure washer

HDS PE CAGE



Optimum performance at remote locations.

These durable, skid-mounted models are designed for optimum cleaning performance at remote locations and feature Kärcher's unique 12V downdraft burner system. The highly compact burner is more than 92% efficient, resulting in better heat transfer using much less fuel. They feature belt-drive crankcase-style pumps. Certified to UL and CSA safety standards.



POWERED by
HONDA

1 Powerful and durable

- Industrial-duty, tri-plunger, oil-bath, belt-drive Kärcher KT pump with 7-year warranty, brass pump head, and Tru-Trak belt adjustments; operates at a low RPM for low-maintenance operation and long life.
- Heavy-gauge 11/4" steel frame with powder coat finish for all-weather protection; with vibration isolators and forklift guides.
- Reliable gas-powered engines with electric start.
- Proprietary scale inhibiting system prevents build-up of mineral deposits inside the coil.
- 11 gallon polyethylene diesel and gasoline tanks for hours of uninterrupted operation.
- Warning lights monitor fuel and scale inhibitor levels; low-fuel shut-off protects fuel pump.

2 Smart features

- Kärcher's 92% efficient top-fired burner delivers more heat from less fuel for the lowest operating costs in the industry.
- Detergent metering valve allows for infinitely variable application of soap while washing in high-pressure mode.
- 50' Kärcher high-pressure steam hose rated for 311°F connects to the gun with an integrated swivel connection.
- Infinitely variable operating pressure, water volume, temperature control, and detergent metering.
- Unsurpassed Kärcher safety features include pressure switches, rupture disk, low-water and low-fuel protection that shuts down burner when incoming water and fuel are insufficient or interrupted.
- Ergonomically designed soft-grip Easy Press trigger gun minimizes operator fatigue.
- EASY!Force gun with cruise control like technology - uses its own recoil force to hold the trigger down - so, no more sore hands after hours of use.

Technical data and equipment.

Features

- Rugged frame construction
- Reliable belt-drive crankcase pumps
- Compact and highly-efficient burner
- Low-fuel cut off
- Anti-scale system - RM 110h
- Electric start engine

Technical data

Model	Part No.	GPM	PSI	Drive	CC	Engine	Fuel	Pump	Weight (lbs.)	Dimensions (L x W x H) inches
HDS 4.0/32 Pe Cage	1.575-615.0	4.0	3200	Belt	389	Honda GX390	Gas	Kärcher KT	692	51 x 33 x 43
HDS 5.5/35 Pe Cage	1.575-617.0	5.5	3500	Belt	688	Honda GX630	Gas	Kärcher KT	741	51 x 33 x 43

Accessories

Order No.	Description
■ 4.118-005.0	EASY!Force trigger gun (German model) - zero force required.
■ 4.112-000.0	41" spray lance
■ 6.110-029.0	50' EASY!Lock Longlife hose with ANTI!Twist connection
■ 2.113-022.0	Power Nozzle 25045 (Fits HDS 4.0/32 Pe Cage)
■ 2.113-026.0	Power Nozzle 25060 (Fits HDS 5.5/35 Pe Cage)
<input type="checkbox"/> 4.111-041.0	Adapter for EASY!Force trigger gun connecting to 3/8" hose
■ Included	<input type="checkbox"/> Optional

For more information:



1150 Davis Road, Suite J ■ Elgin, IL 60123
 (800) 788-8867 ■ info@lorchem.com ■ lorchem.com

We Know How To Get Things **CLEAN**