

NEPTUNE 5 & 7 SERIES

WHY COMPROMISE?

Superior Hot-Water Technology and Performance

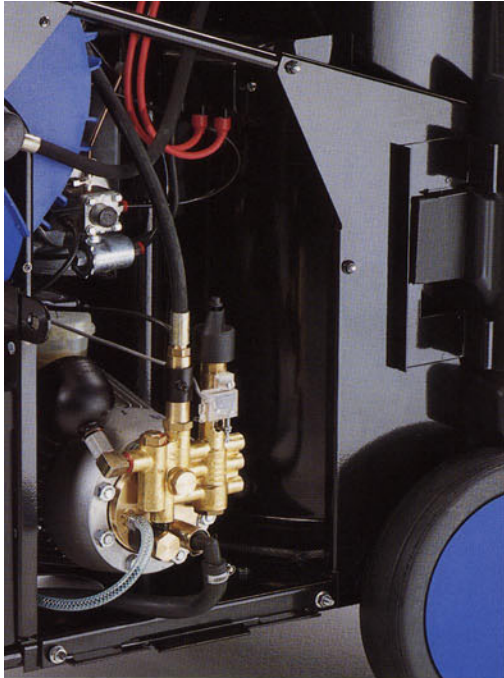
www.alto-online.com



Nilfisk
ALTO
Group Member

NEPTUNE 5 & 7 DELIVERING SUPERIOR SOLUTIONS

*Performance. Serviceability. Ergonomics. Durability.
Nothing was overlooked in developing the new
NEPTUNE 5 & 7 Series*



The NEPTUNE 5 & 7 Series combines ALTO's years of experience and the newest technology on the market for total customer satisfaction.

Every job is different, but high-pressure washer users are all looking for the same outcome - a job well done the first time -- every time. NEPTUNE 5 & 7 Series offers:

- Serviceability -- Low maintenance costs
- Ergonomics -- Increased operator efficiency
- Price/Performance -- Advanced technology
- Cleaning Efficiency -- Useful features
- Long Life -- Customer satisfaction
- Environmentally Friendly -- "Clean" combustion

Fuel Level Indicator
Tells you how much fuel you have before you start the job.

External Water-Break Tank
Easy to refill and inspect container for anti-freeze and anti-scale fluids.



QuickService

Access is the Key

- The service door provides complete access in seconds.
- Pump oil changes are easy; no pan or funnel needed
- Unloader valve and pump service made simple thanks to a new location near the front of the machine's casing
- Easy access to water and fuel filters
- Cleaning or draining of fuel tank made quick and easy with drain plug



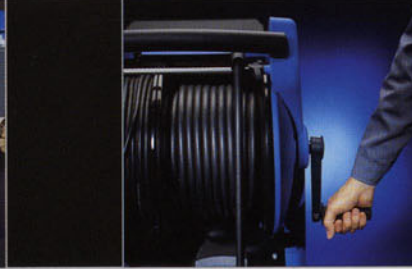
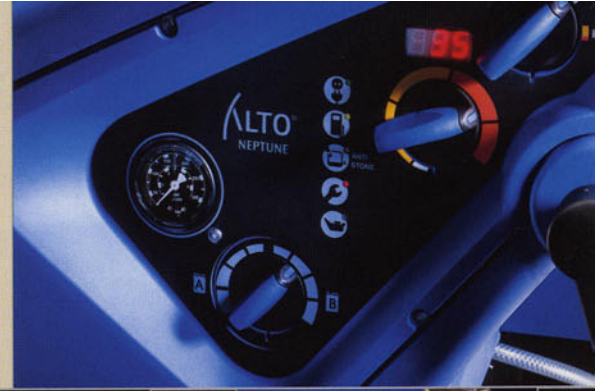
The motor-pump unit slides out for complete access to cylinder head or plungers.



All controls and indicators are in one place:

- Off/Cold/Hot Mode Selection
- Temperature Control
- Detergent A or B Selection & Dosing
- Pressure Gauge
- Temperature indicator display
- Function-monitoring LEDs to indicate power level, low fuel level, low water softener level, maintenance reminder and low pump oil level.

If an error occurs in one of the control systems on the machine, a code will appear in the temperature window to let the operator or technician know why the machine is not operating properly. In many cases, a simple phone call to a KEW service technician is all it takes to correct the problem and continue working. When a quick fix is not available, the code lets the service technician know what the likely cause is and how to repair the machine.



WDK Detergent Valve

The self-cleaning WDK Detergent Valve allows selection and dosing from two detergent tanks.

Flexible Detergent System

Features a built-in 6.5-gallon tank and an optional 2.5-gallon tank for special jobs.

Optional Hose and/or Cable Reel

Stores and protects the hose and electrical cable when not in use.

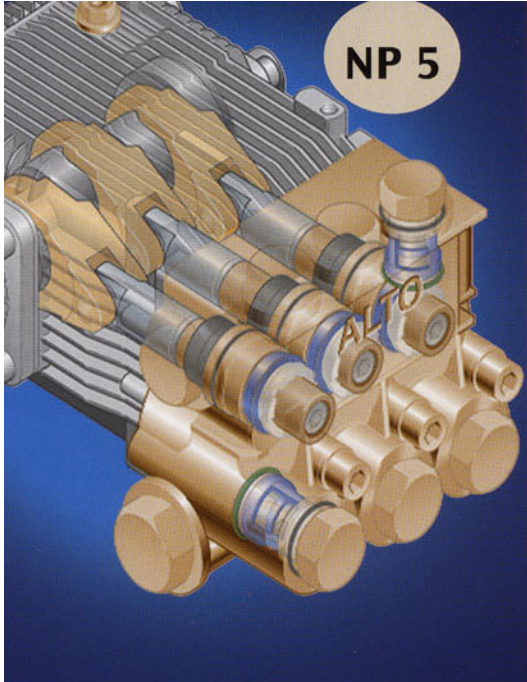
Optional Lift Ring

Can be used as an anti-theft attachment point and allows the machine to be lifted with a crane hook.



NP 5

NEPTUNE 5 Advanced Technology, Outstanding Performance



Advanced ALTO Plunger Pump Technology

• Optimized for additional strength for the NEPTUNE 5 Series, the NP 5 pump uses only full ceramic plungers that resist damage by corrosion better than stainless steel and coated-ceramic plungers.

• The sealing system is made to exacting standards, ensuring top performance and durability.

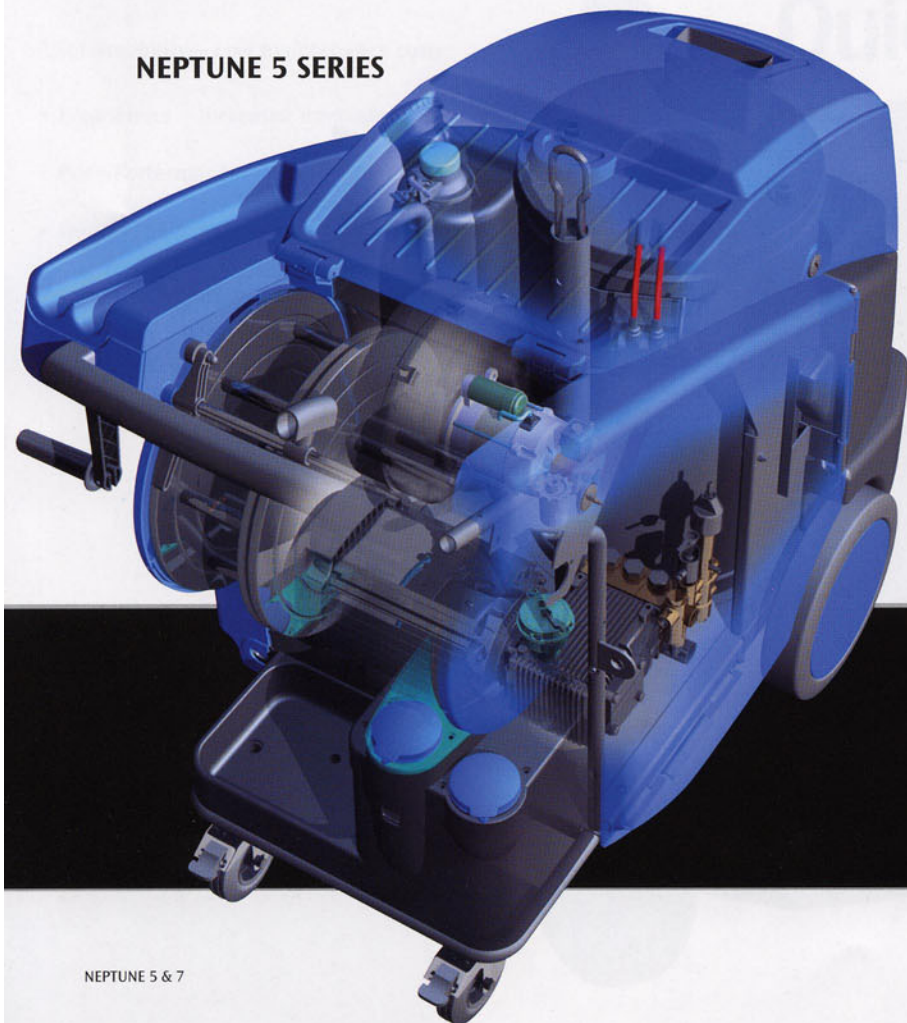
Fuel and Detergent Tanks

Located on the same side as the control panel at a convenient height for easy filling.

Service Door

Provides quick access to internal components for hassle-free maintenance and troubleshooting.

NEPTUNE 5 SERIES

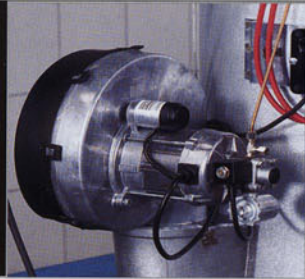
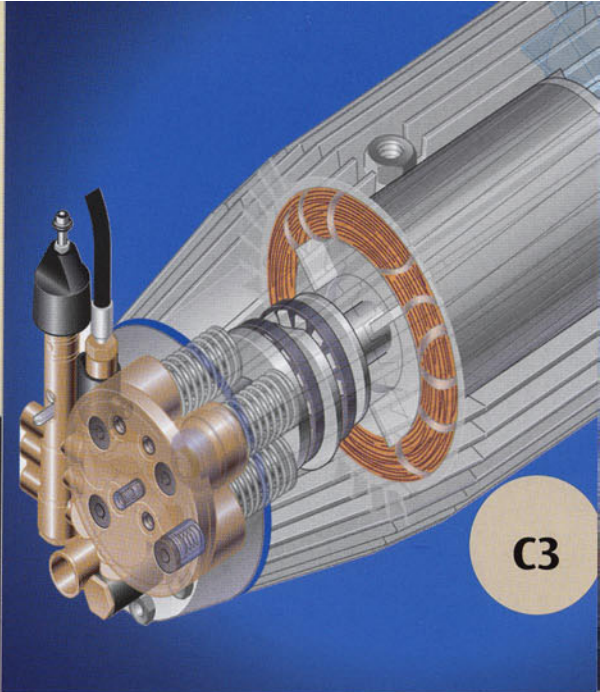


- ← Anti-Leak
- ← Delayed start/s
- ← WDK self-cleaning, c
- ← On-board
- ← Steam capabilit
- ← Fuel-lev
- ← Service door for qui
- ← EasyCle
- ← Sturdy st



NEPTUNE 7

Superior Quality, Total Satisfaction



Duo Motor
The Duo Motor system always turns in the right direction on three-phase machines and protects the fuel pump.

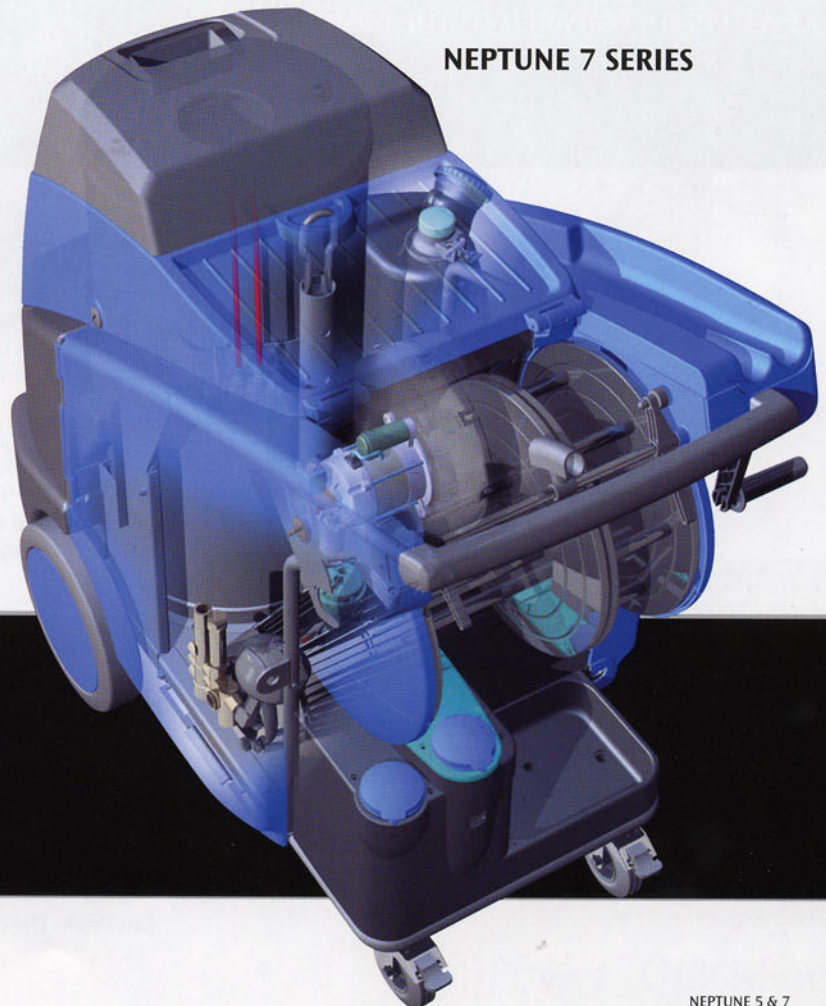


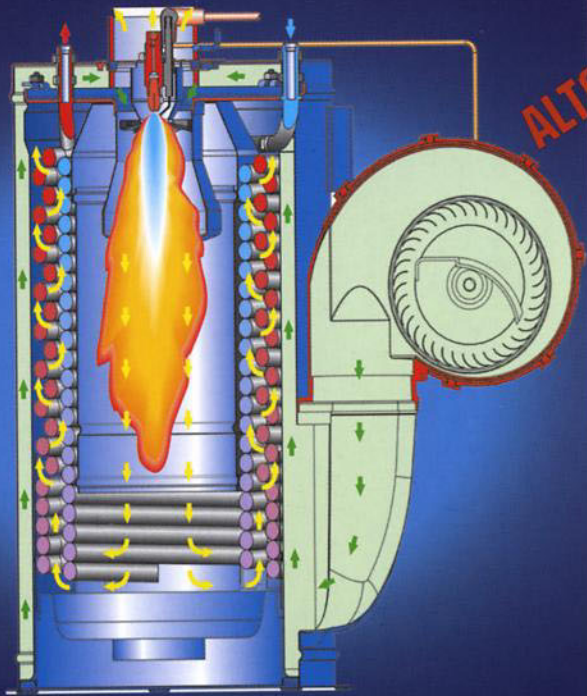
Control Panel
Everything needed to run the machine and check its condition is in one place, making operation simple.

High-Performance, Industrial Pump Technology
KEW introduced axial-piston pump technology for industrial applications in 1980 and has continually made advancements in materials and technology, making this pump system the industry leader. For the Neptune 7 Series, the 4-piston, C3 pump has been integrated with our patented unloader valve to improve flexibility and performance.

- unction →
- for durability →
- l-detergent system →
- gnostics →
- r special tasks →
- gauge →
- easy maintenance →
- Boiler →
- frame →

NEPTUNE 7 SERIES





ALTO PATENT

EcoPower

Clean Performance

The innovative and practical EasyClean Boiler takes nearly all the work out of a time-consuming and difficult task.

Merging advanced technology with serviceability and environmental responsibility produces cleaner air, greater fuel efficiency and reduced maintenance costs.

The NEPTUNE Series' EasyClean boiler addresses environmental issues by reducing the consumption of fuel by more than 6% compared with current conventional technology. And, cleaner emissions benefit everyone. Cleaner air for the future and lower fuel and maintenance costs now!



- FASTEST AND MOST EFFICIENT UNIT IN THE MARKET
- CLEANEST BURNING UNIT IN THE MARKET
- SAVES UP TO 1 GALLON OF FUEL PER OPERATIONAL HOUR AT ΔT 115 °F COMPARED TO THE COMPETITION.



No matter how clean the combustion, the coil will eventually need to be cleaned. In some areas, legislation requires the boiler to be serviced regularly, even if there are no apparent problems. This task has been simplified with the introduction of the EasyClean Boiler.

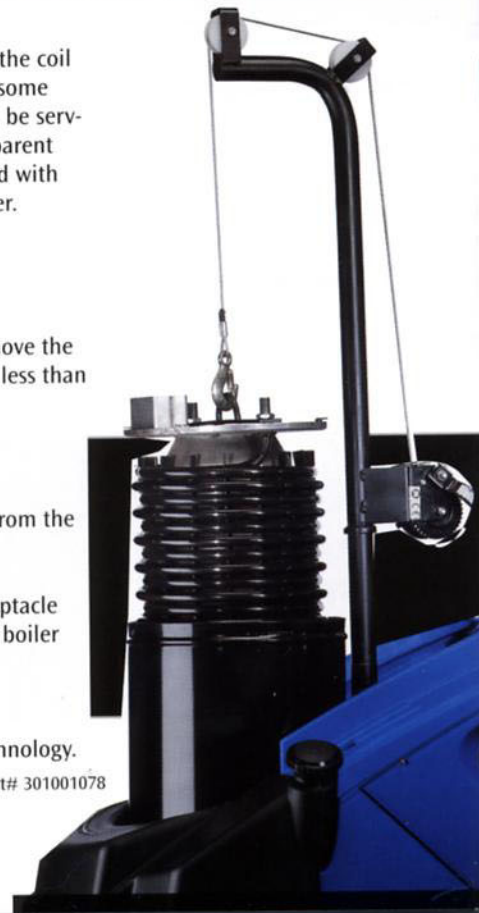
EasyClean

One technician working alone can remove the coil and be ready to begin cleaning in less than six minutes!

1. Open the cabinet door
2. Disconnect the high-pressure hoses
3. Remove 3 small screws and 2 nuts from the top of the boiler
4. Install the lifting bar
5. Slide the service crane into the receptacle
6. Connect the cable hook and lift the boiler up
7. Swing it to the side and lower it.

EasyClean. The evolution in boiler technology.

Service Crane Part# 301001078



ACCESSORIES MAKE THE MACHINE...



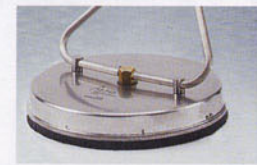
Powerspeed Vario

This effective lance provides the cleaning impact of a 0° nozzle with the coverage of a fan-pattern nozzle.



Super Short Lance

Allows you to control the pressure and effectively clean hard-to-reach places.



PowerScrub S500

The fastest way to clean large floor surfaces with concentrated cleaning impact.



Undercarriage Washer

Simply the best way to clean the entire undercarriage of a car or truck without using a lift. Pressure control included.



Water Sand Blaster

This accessory makes it easy to remove rust, scale and concrete build-up for cleaning or to prepare for painting.



Rotary Brush

Driven by water from the pressure washer, this brush includes a rotation speed control.



ALTO is firmly committed to create a better environment, increase operator efficiency and reduce maintenance costs.

EcoPower
Clean Performance

ErgoSystem
Applied Ergonomics

SilentPower
Quiet Impact

QuickService
Access is the Key

THE NEPTUNE 5 & 7 SERIES HOT FACTS

MODEL		NEPTUNE 5-45	NEPTUNE 5-54	NEPTUNE 7-58	NEPTUNE 7-58X	NEPTUNE 7-66
PART NUMBER		301001611	301001613	301001616	301001940	301001618
Pump Pressure (Max)	PSI	2200	2500	2300	2300	3000
Water Flow (Max)	GPM	4.0	4.5	5.0	5.0	5.0
Water Temp (Steam Mode) °F		302	302	302	302	302
Power	Phase/V/A	1/220/30	3/220/21 or 3/460/13	1/220/35	1/220/35	3/220/28 or 3/460/15
Motor (TEFC)	HP	7.0	7.4	7.8	7.8	10.0
Sound Level	dB(A)	75	75	76	76	76
Fuel Tank	Gal	9.0	9.0	9.0	9.0	9.0
Fuel Consumption Δ 115°F	Gal/hr	1.1	1.2	1.4	1.4	1.5
Weight	lbs	405	405	478	478	478
Dimensions LxWxH	in	45x28x39	45x28x39	45x28x40	45x28x40	45x28x40
Automatic Start/Stop		Yes	Yes	Yes	Yes	Yes
Steam Capability		Yes	Yes	Yes	Yes	Yes
HP Hose	ft	50	50	50	50	50
Detergent Tank A+B	Gal	6.5 + 2.5	6.5 + 2.5	6.5 + 2.5	6.5 + 2.5	6.5 + 2.5
Motor (TEFC)	rpm	1750	1750	1750	1750	1750
Ergo 3000 Gun		Yes	Yes	Yes	Yes	Yes
Tornado 3000 Lance		Yes	Yes	Yes	Yes	Yes
Anti-Leak Function		Yes	Yes	Yes	Yes	Yes
Tornado Plus Nozzle		Yes	Yes	Yes	Yes	Yes
Ergo 3000 Coupling System		Yes	Yes	Yes	Yes	Yes
Full-Ceramic Pistons		Yes	Yes	Yes	Yes	Yes
Hose Reel Kit (# 301001131)		Optional	Optional	Optional	Standard	Optional
Hose & Cable Reel Kit (# 301001130)		Optional	Optional	Optional	Optional	Optional

Distributed by:



Lorchem Technologies, Inc.
 1150 Davis Rd., Ste. J
 Elgin, IL 60123
 P: 847-468-8800 F: 847-468-8811
 1-800-788-8867
 www.lorchem.com

Nilfisk
ALTO
 Group Member